

DESCRIPTION

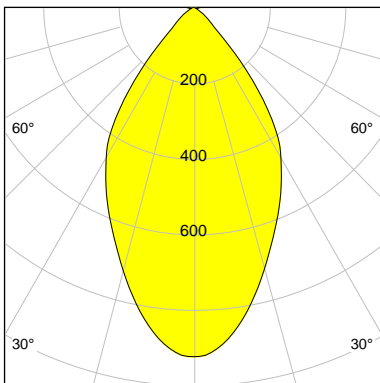
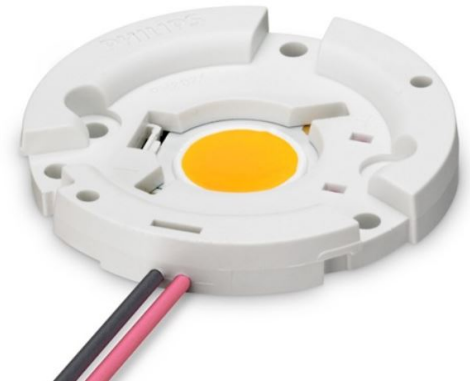
Article-No	114157010101
Outer diameter	75 mm
Inner diameter	68 mm
Height	43.2 mm
Material	Metalized
Technology	SPUN
Surface	Micro skin facets

LED

Type	Fortimo SLM C 930 PW 1211 L19 2828 G7
LES	19
Focus	45.2 mm
Current (sec)	700 mA
Luminous Flux	3021 lm
Power Consumption	426.9 W
FWHM	60.0 °
FWTM	90.2 °
UGR	25.7 (4H/8H - 70/50/20)

Characteristic **Wide Flood**

LOR **88.4 %**



H/m	D/m	E _{max} /lx
1.0	1.2	3163
2.0	2.3	791
3.0	3.5	351
4.0	4.6	198