

DESCRIPTION

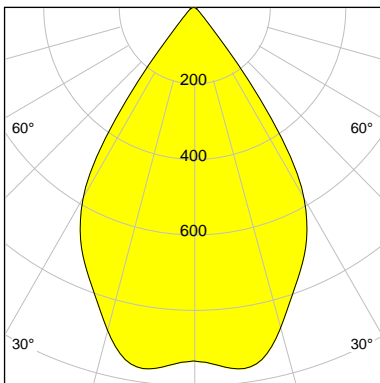
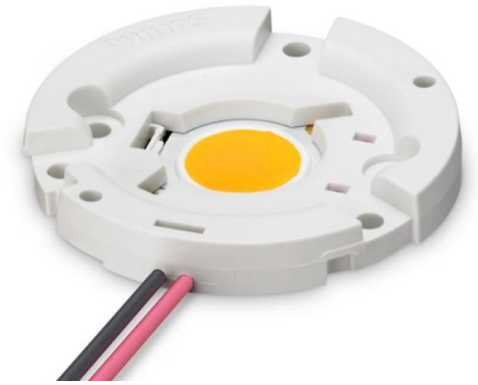
Article-No	114034S04387
Outer diameter	111 mm
Inner diameter	102 mm
Height	69.7 mm
Material	Miro 20 Silver
Technology	ULTRA
Surface	Smooth

LED

Type	Fortimo SLM C 930 PW 1211 L19 2828 G7
LES	19
Focus	71.0 mm
Current (sec)	700 mA
Luminous Flux	3216 lm
Power Consumption	26.9 W
FWHM	65.4 °
FWTM	80.8 °
UGR	21.7 (4H/8H - 70/50/20)

Characteristic **Wide Flood**

LOR **94.1 %**



I-max : 966 cd/klm

H/m	D/m	E _{max} /lx
1.0	1.3	3201
2.0	2.6	800
3.0	3.9	356
4.0	5.1	200