

## DESCRIPTION

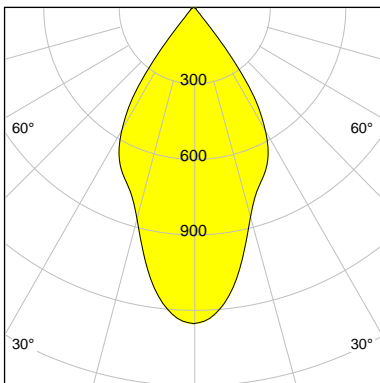
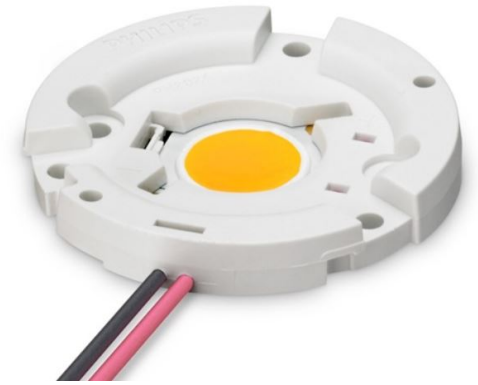
Article-No	114034S04387
Outer diameter	111 mm
Inner diameter	102 mm
Height	69.7 mm
Material	Miro 20 Silver
Technology	ULTRA
Surface	Smooth

## LED

Type	Fortimo SLM C 930 PW 1208 L15 2024 G7
LES	15
Focus	71.0 mm
Current (sec)	700 mA
Luminous Flux	3025 lm
Power Consumption	27.5 W
FWHM	56.0 °
FWTM	79.0 °
UGR	21.4 (4H/8H - 70/50/20)

**Characteristic Wide Flood**

**LOR 94.7 %**



I-max : 1257 cd/klm

H/m	D/m	E <sub>max</sub> /lx
1.0	1.1	4014
2.0	2.1	1003
3.0	3.2	446
4.0	4.3	251