

### DESCRIPTION

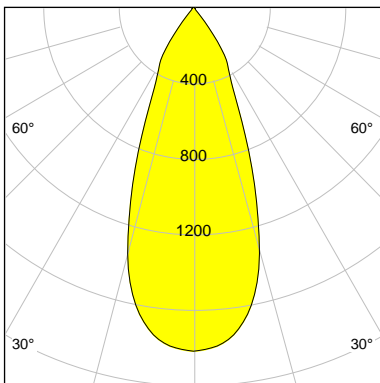
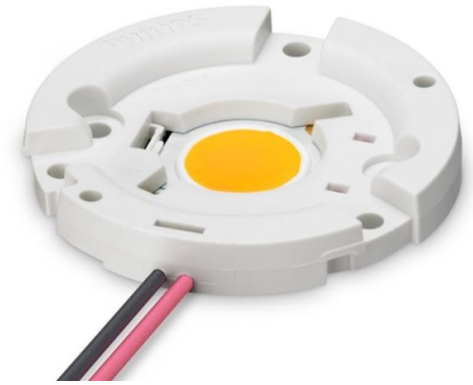
Article-No	114033S04388
Outer diameter	111 mm
Inner diameter	102 mm
Height	69.7 mm
Material	Miro 4 Silver
Technology	ULTRA
Surface	Spherical facets

### LED

Type	Fortimo SLM C 930 PW 1211 L19 2828 G7
LES	19
Focus	71.0 mm
Current (sec)	700 mA
Luminous Flux	3237 lm
Power Consumption	26.9 W
FWHM	39.8 °
FWTM	71.6 °
UGR	18.8 (4H/8H - 70/50/20)

### Characteristic

<b>LOR</b>	<b>94.7 %</b>
------------	---------------



I-max : 1821 cd/klm

H/m	D/m	E <sub>max</sub> /lx
1.0	0.7	6225
2.0	1.4	1556
3.0	2.2	692
4.0	2.9	389