

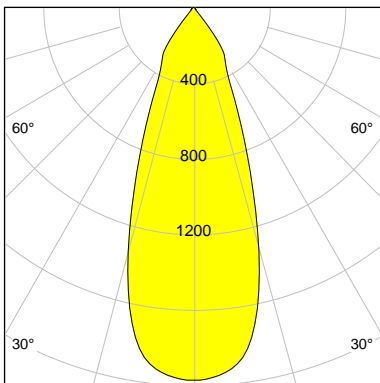
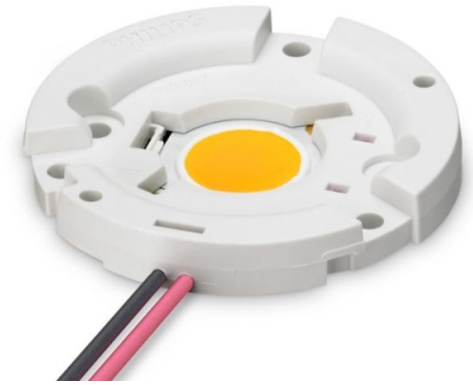
DESCRIPTION

Article-No	114033S04388
Outer diameter	111 mm
Inner diameter	102 mm
Height	69.7 mm
Material	Miro 4 Silver
Technology	ULTRA
Surface	Spherical facets

LED

Type	Fortimo SLM C 930 PW 1208 L15 2024 G7
LES	15
Focus	71.0 mm
Current (sec)	700 mA
Luminous Flux	3044 lm
Power Consumption	27.5 W
FWHM	36.6 °
FWTM	72.8 °
UGR	19.0 (4H/8H - 70/50/20)

Characteristic	Flood
LOR	95.3 %



I-max : 1975 cd/klm

H/m	D/m	E _{max} /lx
1.0	0.7	6308
2.0	1.3	1577
3.0	2.0	701
4.0	2.6	394