

## DESCRIPTION

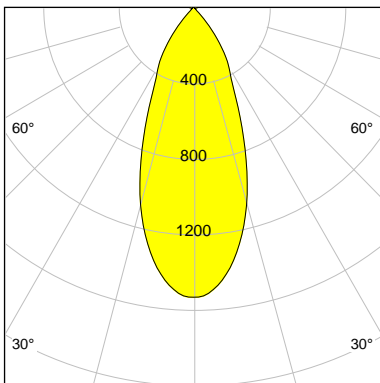
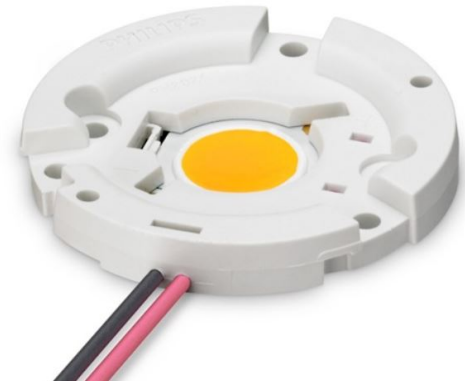
Article-No	113239010101
Outer diameter	75 mm
Inner diameter	68 mm
Height	42.0 mm
Material	Metalized
Technology	SPUN
Surface	Spherical facets

## LED

Type	Fortimo SLM C 930 PW 1211 L19 2828 G7
LES	19
Focus	44.0 mm
Current (sec)	700 mA
Luminous Flux	3080 lm
Power Consumption	26.9 W
FWHM	41.0 °
FWTM	78.0 °
UGR	22.8 (4H/8H - 70/50/20)

## Characteristic

LOR	<b>Flood</b> 90.1 %
-----	------------------------



I-max : 1536 cd/klm

H/m	D/m	E <sub>max</sub> /lx
1.0	0.7	5248
2.0	1.5	1312
3.0	2.2	583
4.0	3.0	328